

DeSOTO COUNTY, MISS.

Reverse

GRANTEE	GRANTOR	NATURE OF INSTRUMENT	DATE OF FILING INSTRUMENT			RECORDED	
			MO	DA	YR	BOOK	PAGE
Davidson - Charles F. Dockery, Chas P. et al	Mrs. Mildred Banks et al Fed. Int. Credit Bank of Ky	Release	Jan	30	1934	5	25
		Release	Feb	26	1934	5	42
1935							
Dockery - C. P. et al Delta Construction Co.	Fed. Inter. Credit Bank Link Belt & Co.	Release Sales Agreement	Feb	5	1935	5	151
			Mar	15	1935	5	180
1936							
Dockery - Chas. P.	Fed. Inter. Credit Bank	Release	Feb	1	1936	5	269
Dockery - Chas P.	J. M. Williams	Minor	Feb	3	1936	5	270
Dockery - Chas P.	Mrs. Elizabeth D. Covitt	"	Feb	6	1936	5	273
2063 Denham - E. L. et al	Fed. Inter. Credit Bank	Release	Feb	28	1936	5	285
Dockery - Chas. P.	Origit Bros. & Co	"	Nov	24	1936	5	347
3314 Dyckman - Wm Alexander Dahlute et al	The Bond Alliance Trust Co. Melia Dahlute Hawks et al	P/A Sale	Dec	2	1936	5	351
" " "	B. F. Hawks et al	"	Dec	5	1936	5	349
Duddleson - C. A.	Bucyrus Erie Co.	Sales Contract	Dec	22	1936	5	352
1937							
Davis - W. M.	R. S. Watson	Release	Jan	12	1937	5	357
Dockery - Chas. P.	Fed. Inter. Credit Bank	"	Jan	16	1937	5	361
Dockery Jr. Donald M.	Kenneth D. Morgan et al	Minor Receipt	May	21	1937	5	392
" " " "	Col. Albert B. Dockery et al	"	May	21	1937	5	392
" " " "	Eprey D. Foreyth et al	"	May	21	1937	5	392
DeLaney - W. A.	Pioneer Cravel Equip. Mfg. Co.	Sales Contract	Aug	5	1937	5	415
Duddleson - C. A.	Bucyrus Erie Co.	Contract	Aug	6	1937	5	414
Dunn - W. C.	Mrs. Henrietta Harris	Rent Contract	Aug	12	1937	5	413
Aye - Albert	Johns Scale Co	Sales Contract	Nov	20	1937	5	448
Broke - W. M.	J. F. Mercer & Co	Release	Dec	3	1937	5	445
Broke - W. M.	Cold Press Mill	"	Dec	4	1937	5	445
1938							
Dockery - Chas. P.	Fed. Inter. Credit Bank	Release	Feb	11	1938	5	460
Davis - W. M.	Fed. Inter. Credit Bank	"	Feb	23	1938	5	467
Broke - W. M.	Tri State Agul. Credit Corp	"	May	6	1938	5	498
Broke - W. M.	J. L. Mercer & Co	"	Dec	17	1938	5	545
1939							
Dockery - C. P.	Fed. Inter. Credit Bank	Release	Jan	23	1939	5	550
American - J. L.	Mrs. Mildred Banks et al	Bill of Sale	Feb	14	1939	27	62
" " "	Mrs. Minor Banks et al	"	Feb	14	1939	27	62
" " "	Mrs. Full B. Gates et al	"	Feb	14	1939	27	62
" " "	Mrs. Mildred B. Blackburn et al	"	Feb	14	1939	27	62
" " "	Mrs. Elizabeth B. Gerber et al	"	Feb	14	1939	27	62
Dean - Zula B.	J. J. Dean	P/A	Mar	22	1939	5	581
Duddleson, C. A.	Bucyrus Erie Co	Contract	April	22	1939	5	585
Davidson, Edna	Mildred Banks	P/A	May	16	1939	5	597
Darden - Wilson N.	W. N. Darden	Sale	Oct	7	1939	6	6
Douglas - Mrs. Mary	Woodie Greer	Contract	Nov	1	1939	6	8

DeSOTO COUNTY, MISS.

Reverse

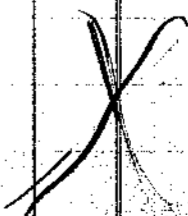
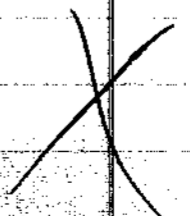
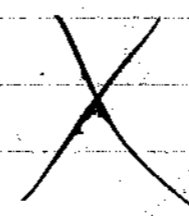
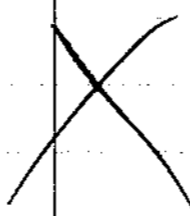
GRANTEE	GRANTOR	NATURE OF INSTRUMENT	DATE OF FILING INSTRUMENT			RECORDED	
			MONTH	DAY	YEAR	BOOK	PAGE
1940							
Auncan - J. L.	C. P. Jamieson	Release P/a	Jan	8	1940	6	23
Dockery - Chas. P.	Fed. Inter. Credit Bank	Release	Jan	20	1940	6	24
De Soto Auto Co.	James R. Jones et al	Assignment	Feb	8	1940	6	37
" " "	Ballie W. Howell et al	"	Feb	8	1940	6	37
" " "	Clara E. Raddy et al	"	Feb	8	1940	6	37
" " "	Jessie M. Williams et al	"	Feb	8	1940	6	37
" " "	Robert E. Jones et al	"	Feb	8	1940	6	37
" " "	James W. Jones et al	"	Feb	8	1940	6	37
Dockery - Charles P.	Albion Store & Athletic Co	Salvage Contract	Aug	21	1940	6	100
1941							
Dye, A. M.	The Cincinnati Time Recorder Co	Salvage Contract	Feb	24	1941	6	152
Dockery, Charles P.	Mrs. Elizabeth D. Everett et al	P/a	Feb	26	1941	6	155
" " "	John L. Everett et al	P/a	Feb	26	1941	6	155
Benham - E. L.	The McCaskey Register Co.	Contract	Mar	8	1941	6	159
Benham - E. L.	U.S. Fixture & Scale Ex. Co	"	Mar	8	1941	6	160
Dockery - Charles P.	Fed. Inter Credit Bank	"	Mar	12	1941	6	162
Dye - Albert	C. W. Hussey & Co	"	Mar	26	1941	6	168
Dye - A. M.	M. J. Grogan Inc	Salvage Contract	Apr	24	1941	6	185
De Soto Sand & Gravel Co.	Lewis Supply Co.	"	May	2	1941	6	188
De Soto Auto Co.	C. C. McCaskey	Note agree.	Aug	22	1941	6	218
1942							
Dockery - Charles P.	Fed. Inter. Credit Bank	Release	Jan	9	1942	39	28
Dockery - Charles P.	Mrs. Elizabeth D. Everett et al	P/a	Jan	24	1942	6	261
Dockery - Charles P.	John L. Everett et al	"	Jan	24	1942	6	261
Dalbrite - Katherine B.	Wm. M. Dalbrite	P/a	July	11	1942	6	301
De Soto Drug Co.	The National Cash Register Co	Salvage Contract	Dec	30	1942	6	321
1943							
Dockery - Chas. P.	Fed. Inter Credit Bank	Release	Jan	27	1943	6	330
Davis - W. M.	Geo. J. Webb & Co	"	Jan	30	1943	6	332
Davis - W. M.	Joseph L. Mercer & Co	"	Jan	30	1943	6	332
Dockery - Chas. P.	Mrs. Elizabeth D. Everett	P/a	May	31	1943	6	359
Dockery - Chas. P.	Mrs. Conyrie A. Lake	"	July	27	1943	6	370
Dockery - Chas. P.	John L. Everett	"	July	29	1943	6	371
Dockery - Chas. P.	Mrs. Elizabeth D. Everett	"	July	29	1943	6	371
Dickson Gun & Ice Co.	Continental Gun Co	Release	Nov	30	1943	6	387
1944							
Dennis Elnera	Frazier Bolton	P/a	Aug	19	1944	6	402
Dennis Elnera	Geoffrey Robinson	"	"	"	1944	6	403
Dennis, Elnera	Elizabeth Franklin	"	Sept	19	1944	6	404
Watts, J. Eugene	J. F. Canizer	Lease	Nov	9	1945	6	444

DeSOTO COUNTY, MISS.

Reverse

TOP 881053

GRANTEE	GRANTOR	NATURE OF INSTRUMENT	DATE OF FILING INSTRUMENT			RECORDED	
			MONTH	DAY	YEAR	BOOK	PAGE
Delta Oxygen Co.	A. Z. Owens	Sale Cont.	May	31	1946	6	486
Dabney, Mrs. Anna G.	M. B. Dabney Jr.	P/a Cont.	Oct.	18	1946	6	500
Dunlap, Eugene H.	W.A. Dunlap	Sale Cont.	July	18	1947	6	607
Dunlap, W.A.	Eugene H. Dunlap	"	Dec	15	1947	7	65
Dye, Raymond C.	Mrs. Julia Woolsey	"	Dec	17	1947	7	67
Dunlap, Eugene H.	W.A. Dunlap	"	Dec	30	1947	7	74
Dodson, G.W.	Wesley Brady, et al	Bill Sale	Jan	7	1948	7	80
Damier, James	Alex Damier	Lease	Nov	31	1948	7	118
Lee, Angus E.	Harry S. Wheeler	"	May	29	1948	7	158
Lee, Angus E.	M. L. Lee	"	May	31	1948	7	160
Dean - Lawrence	Mrs. Elizabeth C. Sest	Lease Cont.	Feb.	1	1949	7	252
Dickerson, Daisy W.	Noris Gilliam	Sale Cont.	May	28	1949	7	289
Doddridge, J.A. Jr.	J.A. Doddridge, Sr.	Lease Cont.	July	26	1949	7	323
Dunaway, Billy W.	Mrs. S. N. Dunaway	Lease Cont.	Oct.	17	1949	7	368
DeSoto Auto Co.	Charles F. Randall	Sale Cont.	Oct.	29	1949	7	379
Dees, Elroy I.	W. W. Cox	Lease Cont.	April	21	1950	7	508
DeSoto Auto Co., Trustee	Commercial & Industrial Bank, Trustee	-	May	30	1950	7	527
Douthit Lumber Co.	J. C. Sing	Sale Cont.	Jan.	9	1951	8	92
Dyer Motor Co.	Guy W. Shoemaker	"	Jan.	25	1951	8	114
Droke, Mrs. Lois	William Grace Droke	Power of Attorney	Feb.	19	1951	8	128
DeSoto Co. Youth Fair	DeSoto Co. P & M Assn.	-	Mar.	24	1951	8	170
Dockery, Ruby B, et al	American Bonding Co. of Baltimore	Power of Attorney	Apr.	12	1951	8	194
Dean, Miss Rebekah	S. B. Dean	Power of Attorney	Nov.	26	1951	8	351
1952							
Davidson Edna	Lewis Morrow Jr et al	Power of att	Oct	18	52	9	55-57
Davidson Edna	Minor Banks Lewis et al	Power of att	Oct	18	52	9	54-55
Darby P.W.	E.T. Adams	Rest Cont	Nov	10	52	9	90
1953							
Dunaway Richard M	C M Dunaway	Lease Cont	Aug	17	53	9	286
Dunaway Richard M.	C M Dunaway	Lease Cont	Sept	11	53	9	298
Dunaway Richard M.	Mrs May N. Beall	Lease Cont	Oct	2	53	9	321
Dr. Pepper Bottling Co.	Dr. Pepper Finannu Corporation	Sale Cont	Dec	18	53	9	368
1954							
Dickson Susan Hay	Miss Mattie Winders et al	Lease	Aug	12	54	10	6
DeSoto County Co-operative (A.A.)	Miss State College Extension Dept	Ague	Aug	17	54	10	11
Davidson, Miss Edna	Minor B. Lewis, et al	Ague	Oct	30	54	10	58



DeSOTO COUNTY, MISSISSIPPI

REVERSE

GRANTEE	GRANTOR	Nature of Instrument	Date of Filing Instrument			Recorded	
			Month	Day	Year	Book	Page
	1961						
Daniel Sam Lee	Commercial Credit Corp.	Release	Jan	6	1961	16	174
Davis Rodford	Commercial Credit Corp	Release	Jan	18	1961	16	179
Davis Donald Scott et al	Hattie Mae Davis et al	agree	Mar	7	1961	16	226
Darling, Lester Ray et al	Mrs Jane F. Herrington	sale	Mar	11	1961	16	236
DeSoto airpark Inc.	DeSoto Industrial air Park Inc	cancelation	Apr	7	1961	16	253
DeSoto airpark Inc	DeSoto Industrial air Park Inc	lease	Apr	7	1961	16	256
DeSoto Redi-mix Co Inc.	The First Nat Bank of Miss	Release	Apr	11	1961	16	262
Davis Alexander	Commercial Credit Corp	Release	Apr	29	1961	16	309
DeSoto Redi-mix Co Inc	Tri State Mach Distributors	Release	June	1	1961	16	411
Ellick Moore Inc	R. H. Stewart 1 et al	sale cont	Aug	16	1961	18	193
DeSoto Dairy Supply Co	Gayusa Farms	"	Aug	18	1961	18	197
DeSoto Redi-mix Co, Inc	The First National Bank	release	July	20	1961	18	92
DeSoto airpark Inc.	DeSoto Industrial air Park Inc	lease	Aug	26	1961	18	233
Dancy, Roy, et al	J. M. Guest	cont	Oct	28	1961	18	473
DeSoto Dairy Supply Co.	Leroy Allison	"	Dec	19	1961	19	21
	1962						
DeSoto Dairy Supply Co	Leroy Allison	sale cont	Jan	12	1962	19	107
Dockery armstead	Commercial Credit Corp	Release	Feb	3	1962	19	214
Dunlap Willie M	Commercial Credit Corp	Release	Feb	3	1962	19	217
Durritt, Bobby G.	Commercial Credit Corp.	Release	April	4	1962	19	405
Dorsey, Jake	Commercial Credit Corp.	Release	April	4	1962	19	406
DeSoto Redi-mix Co.	The First National Bank of Miss	Release	May	26	1962	19	608
Duckey, James	Commercial Credit Corp.	Release	May	29	1962	19	609
Davidson James P et al	James Scott Weisinger	sales cont	June	11	1962	20	21
Duckey, Arnis	Commercial Credit Corp.	Release	July	30	1962	20	164
Commercial Credit Corp.	Edise Edwards	cont	Oct	3	1962		
Commercial Credit Corp.	Dr. Julian F. Jones	lease	Oct	3	1962		
Dye A.M.	W. T. Robinson	cont	Dec	4	1962	21	7
	1963						
Turnerion, Lovell L.	Gay. Lease Markets Inc.	Lease	Feb.	18	1963	21	316
Durritt, B. G.	Commercial Credit Corp.	Release	Feb.	20	1963	21	338
VOID Davis, Mrs. Maude R.	Southwest Land Co. Inc.	boundary	Mar	27	1963	VOID	See W...
Douglas, E. E.	Mrs. M. W. Lee	agree	April	18	1963	21	552
DeSoto Chemical & Supply Co Inc	Petroleum Chemicals, Inc.	but-land	May	1	1963	21	615
DeSoto Dairy Supply Co.	Leroy Allison	cont	May	20	1963	22	97
Dye, J. J.	The First National Bank of Miss	Release	May	22	1963	22	94
Delta Discount Co.	Fred Ward	cont	June	14	1963	22	215
" " "	L. K. Wings	"	June	14	1963	22	217
" " "	Bill Shannon	"	June	14	1963	22	213

DeSOTO COUNTY, MISSISSIPPI
REVERSE

DEMENT PRINTING CO., MERIDIAN, MISS.

GRANTEE	GRANTOR	Nature of Instrument	Date of Filing Instrument			Recorded	
			Month	Day	Year	Book	Page
Delta Discount Co.	Moody J. Day, et al	Sales Cont.	June	27	1963	22	262
Deer Corp.	DeSoto County Superior, District # 2	Release	July	22	1963	22	387
Delta Loan & Finance Co.	H. W. Jones	Sales Cont.	Aug	5	1963	22	471
Delta Discount Co.	Robert E. Barnett, et al	"	Sept.	5	1963	22	587
Drott Mfg Corp.	Chester L. Johnson	"	Sept	28	1963	23	93
Delta Discount Co.	H. & B. Gaul Co.	"	Oct.	10	1963	23	147
Sackey, Alice	Commercial Credit Corp.	Release	Oct.	11	1963	23	153
Delta Discount Co.	James J. Zucke	Sales Cont.	Oct.	29	1963	23	227
Delta Discount Co.	Dean Hollamley	"	Nov	20	1963	23	339
Davis, Mrs. Maud R.	First De Soto Corporation	Agreement	Nov.	25	1963	23	359
Day, A. M.	W. L. Robinson	Agreement	Dec.	4	1963	23	405
Delta Discount Co.	J. F. Riddle	Sales Cont.	Dec.	17	1963	23	479
1964							
Sackey, Henry	Commercial Credit Corp.	Release	Feb	7	1964	24	45
Delta Loan & Finance Co.	Moody J. Day	Sales Cont.	Feb.	20	1964	24	113
Norsey, Jake	Commercial Credit Corp.	Release	April	16	1964	24	407
Deer, Beanie	Southwestern Real Co. Inc.	Sales Cont.	April	21	1964	24	438
DeSoto County Baptist Chan.	Adjutant General, Miss. National Guard	Agreement	Apr	4	1964	25	283
Davis, Edward S.	Francis Davis Wilkinson, et al	Agreement	Aug	8	1964	25	397
Dye, J. O.	Commercial Credit Corp.	Release	Aug	14	1964	25	337
Deer Corp.	Buford, Hall & Smith	Agreement	Aug	31	1964	25	405
Deer Corp.	DeSoto County Superior Dist. 2	Release	Sept.	1	1964	25	419
Davidson, S. D.	J. S. Anderson	Agreement	Oct.	26	1964	26	46
Harling, Lester R.	Commercial Credit Corp.	Release	Nov	13	1964	26	129
Deer, Charles P. Jr.	" " "	"	Nov	13	1964	26	130
1965							
Dickens, W. E.	L. E. Dickens	Deed of Property	Jan	6	1965	26	319
Dunlap, Thomas	Commercial Credit Corp.	Release	Mar	31	1965	27	67
Dye Clifford L.	The First National Bank of Miss	Release	May	22	1965	27	345
Delta Discount Co.	Billy D. Hill et ux	Sales Cont.	June	22	1965	27	472
Dealers automobile auction of the	Great Northern Realty Co Inc	Lease	June	23	1963	27	493
Deer Corp.	S & S Machinery Co.	Lease	July	24	1965	28	31
Dye Sarah F.	Commercial Credit Corp.	Release	Aug	28	1965	28	233
Davis, J. R. et al	Mary Pauline Davis, et al	Deed	Sept	17	1965	28	301
Delta Discount Corp.	Berkie S. Richard	Sales Cont.	Sept	30	1965	28	407
Dacus, J. L.	Federal National Mortgage Assn	Agreement	Oct	9	1965	28	447
Void See Chattel	Deer DeSoto Div Unit Union	Agreement	Oct	23	1965		bid
Davis, Henry S. et al	O. J. Watson	Release	Oct	30	1965	28	593
Dallas & Co. Inc.	O. J. Watson	"	Oct	30	1965	28	589
Delta Discount Co.	Dr. Edgar S. Buffaloe	Sales Cont.	Nov.	5	1965	29	45
Delta Discount Co.	William B. Bass et ux	"	Nov	20	1965	29	124

DeSOTO COUNTY, MISSISSIPPI

REVERSE

GRANTEE	GRANTOR	Nature of Instrument	Date of Filing Instrument			Recorded	
			Month	Day	Year	Book	Page
Dye, A. M.	Associated Discount Corp.	Release	Dec	3	1965	29	180
Drake, William Grain	Mrs. Mary Lois Drake	P/A	Dec	17	1965	29	232
Dye, Henry	The First Nat. Bank of Mpls.	Release	Dec	20	1965	29	247
Dye, A. M.	Associated Discount Corp.	"	Dec	23	1965	29	264
1966							
Darling, Lester R.	Comm Credit Corp.	Release	Jan	15	1966	29	360
DeSoto County Co-op A.H.	University of Mississippi	University agreement	Jan	25	1966	29	413
Delta Discount Co.	Walter J. Cook	Release	Jan	26	1966	30	71
Deaver, Robert	The First Natl. Bank of Mpls.	Release	May	6	1966	30	403
Delta Discount Co.	Benjamin D. Hudgins	Release	May	10	1966	30	429
Delta Discount Corp.	John H. Crawford, et al	"	Jan	9	1966	30	621
n.B. Delta Discount Corp.	William B. Bass	"	June	15	1966		
Deramus, Howard	Commercial Credit Corp.	Release	Aug	20	1966	31	493
Darden, Wilson	Mrs. Ethel G. Darden	P/A	Sept	7	1966	31	605
Dexter, Kenneth E	Louis R. Stoffer	Transfer agreement	Nov	9	1966	32	569
Davis, C. B.	John Deere Co.	Release	Nov	23	1966	33	48
Dees, David D.	The First Nat. Bank of Mpls.	Release	Dec	1	1966	33	88
Dees, Russell	Massey-Ferguson Inc.	"	Dec	5	1966	33	183
1967							
Docker, Charles P. Jr.	John Deere Co.	Release	Jan	6	1967	33	331
Davis, Thurman	John Deere Co.	"	Jan	23	1967	33	418
Dr Daniel, Frank	John Deere Co.	"	Jan	23	1967	33	412
Davis Eln: Div. C. Union	Davis Eln. Div. C. Union	Transfer	Jan	3	1967	33	495
Miss Elroy L.	Massey-Ferguson Finance Corp.	Release	Feb	14	1967	33	615
DeSoto County Coop.	E. E. Wilray	Release	Feb	17	1967	34	1
Allen F. J.	Massey-Ferguson Inc.	Release	Feb	27	1967	34	66
Allen F. J.	Massey-Ferguson Inc.	Release	Feb	27	1967	34	67
Darden, Mary	Wilson Darden	P/A	June	6	1967	35	205
Darden, Mary	Mrs. Jane R. Darden	P/A	June	6	1967	35	206
Guid See Delta	George Heed	Release	June	17	1967	35	See
Drake, John V. Jr.	The First Nat. Bank of Mpls.	Release	July	6	1967	35	532
Daniel Albert Prestor	Harvey Hamilton	Release	Aug	7	1967	36	66
Dever, Clyde R.	The First Nat. Bank of Mpls.	Release	Aug	21	1967	36	166
Duncan, Sam. J.	The First Nat. Bank of Mpls.	Release	Sept	6	1967	36	323
1968							
Daniels, Sammie	John Deere Company	Release	Feb.	3	1968	38	194
Docker, Jr., Samby	Commercial Credit Corp.	Release	Feb.	3	1968	38	211
Davis, Johnnie S.	Mrs. Julie P. Dee	Release	Feb.	17	1968	38	295
Dye, A. M.	James R. Dunn	Release	Mar.	30	1968	39	69
Dowdy, Flossie	The First Nat Bank of Mpls.	Release	May	10	1968	39	174

DeSOTO COUNTY, MISSISSIPPI
REVERSE

DEMENT PRINTING CO., MERIDIAN, MISS.

GRANTEE	GRANTOR	Nature of Instrument	Date of Filing Instrument			Recorded	
			Month	Day	Year	Book	Page
Dockery, Charles F. Jr.	John Deere Co.	Release	May	29	1968	39	186
Hancy, James R.	"	"	May	29	1968	39	187
Daniels, Bobby	Associate Discount Corp.	Release	July	9	1968	39	233
Darling, Lester	Commercial C. Corp.	"	July	22	1968	39	245
Day, Charles E.	Commercial C. Corp.	"	July	23	1968	39	244
Douglas, Wilford Lee	County of San Diego	"	Aug	30	1968	39	274
Douglas, Mrs. Lee	Robert Lee Redding	Attorney	Sept.	10	1968	39	281
Conrad, Jimmy	John Deere Co.	Release	Sept.	26	1968		
Day, James E.	The First Nat. Bank of Natchez	Release	Oct	1	1968	39	304
DeSoto County Coop	Miss. State University Extension	Release	Oct	14	1968	39	301
Donnawell, Genevieve	The First Nat. Bank of Natchez	"	Nov	1	1968	39	330
Douglas Manufacturing Co.	J. R. Steward, et al	Contract	Nov.	4	1968	39	337
Dickson R. W.	John Deere Co.	Release	Nov.	15	1968	39	366
1969							
Daniel, Orlan	Hernando John Deere Co.	Release	Jan	21	1969	39	275 A
Daniels, Sammie	John Deere Co.	Release	Feb.	15	1969	39	414
Das, Russell	John Deere Co.	Release	Feb.	25	1969	39	424
Dye, Walter E.	The Fiat National Bank	Release	Feb.	28	1969	39	427
Daniel, Sammie Lee	Eugene Noel Jr. et al	Lease	March	1	1969	39	425
Daniel, Frank	Commercial Credit Corp.	Release	March	12	1969	39	432
Delta Cream	The National Cash Register Co.	Release	March	31	1969	39	459
Day, Mrs. C.C.	First National Bank of Natchez	"	May	15	1969	39	522
Deaton, Hattie L.	P. B. Benham Jr. et al	sales cont.	June	23	1969	39	529
Dacus, J.L.	Federal Nat. Mtg. Assn.	Report 9/1	Sept	18	1969	39	572
Darling, Lester R.	Commercial Credit Corp	Release	Sept	26	1969	39	575
"	"	"	Sept	26	1969	39	576
1970							
Dees, Russell	John Deere Co.	Release	Feb.	20	1970	40	82
"	"	"	Feb.	20	1970	40	82
Davis, Richard	Mrs. W. V. Davis	Attorney	April	20	1970	40	137
Clarke, Herbert A III	J. R. Adams	P/A	June 2	1970	40	163	
Development Dept of Memphis	J. R. Adams	Deve. cont.	June 2	1970	40	168	
Dawdy, J. L. et al	Corpus Engineers	cont. sale	Aug	11	1970	40	205
DeSoto Development Corp.	Charles Sumner Co.	agru. lease	Sept	22	1970	40	245
Davis, Tommy	Southway Land Co. inc.	will 9/26	May	3	1971	40	405
Deussen Ann	Martin F. Turner	Release partur.	Jan	4	1971	40	441
1971							
Dees, Russell	Bessie M. Spencer	Lease	Sept	21	1971	40	487
Dees, Russell	Bessie M. Spencer	Lease	Sept	21	1971	40	489
Dequinn, Amelia P.	The First Nat. Bank of Natchez	release	Nov	27	1971	40	517
Davis, David R.	Hattie Mae Davis	P/A	Apr.	11	1972	40	643

DeSOTO COUNTY, MISSISSIPPI
REVERSE

GRANTEE	GRANTOR	Nature of Instrument	Date of Filing Instrument			Recorded	
			Month	Day	Year	Book	Page
Munshy, Richard L. et al	Don Ray Wood	option	June	17	1972	41	24
Desoto Utility Co.	Wells Water Assoc	agrec.	July	3	1972	41	52
Dalrymple, J. Bruce	Arnold A. Dalrymple	PA	July	6	1972	41	65
Desoto Dev. Corp.	Addressograph Multigraph Corp.	release	Nov	24	1972	41	173
De Soto County, Miss.	Dorothy D. McRae, et al	lease	Nov.	10	1972	99	434
1973							
Dubree, Betty Jean	William J. Burns Bethel	PA	Apr	23	1973	41	370
Desoto Properties Corp.	The Northland Corp.	lease	June	11	1973	41	409
Dunavant, W.B. Enterprises	Howard Plantation	Contract	Sept.	27	1973	41	505
" " "	Swin dell, Farm, Inc.	Contract	Sept.	27	1973	41	508
Dunavant, W.B. & Company	Blythe Planting Company	Contract	Sept.	27	1973	41	511
Dunavant Enterprises, Inc.	E. M. Upchurch & Son	Contract	Sept.	27	1973	41	514
Dunavant, W.B. & Company	E. F. Crenshaw, Jr.	Contract	Sept.	27	1973	41	517
" " "	Herman Kachler	Contract	Sept.	27	1973	41	520
" " "	John E. Matthews, Jr.	Contract	Sept.	27	1973	41	522
" " "	Banks & Company	Contract	Sept.	27	1973	41	524
" " "	D. R. Haynes, Sr., et al	Contract	Sept.	27	1973	41	526
" " "	W. W. Sullivan	Contract	Sept.	27	1973	41	528
" " "	E. F. Crenshaw, Jr. (Adams Farm)	Contract	Sept.	27	1973	41	530
" " "	G. F. Pitts	Contract	Sept.	27	1973	41	532
" " "	Bibb & Kachler	Contract	Sept.	27	1973	41	534
" " "	Allen E. Read	Contract	Sept.	27	1973	41	536
" " "	Earl Read	Contract	Sept.	27	1973	41	538
" " "	Walls Planting Company	Contract	Sept.	27	1973	41	540
" " "	Camilla Plantation, Inc.	Contract	Sept.	27	1973	41	542
" " "	Clifton Land & Linn Co.	Contract	Sept.	27	1973	41	544
DeLoach, Eddie Southern Drywall Co.	Dud Lewis Lewis Painting Contractors	Contract Contract Contract Contract	Dec.	19	1973	42	45
1974							
De Soto Village Subdivision	Albert Daniels	Ordinance	Aug	21	1974	42	318
Daniels, James E.	Frank Daniel	farm lease	Oct.	10	1974	42	370
" " "	Town of Olive Branch, Miss.	lease contract	Oct.	10	1974	42	369
De Soto Technology Corp	Everett C. Daves, et al	lease agreement	Oct.	31	1974	42	411
Daves, Virginia T., et al		lease	Nov.	18	1974	42	464
1975							
Darden, Mary	Wilson Darden	reversion	Jan.	01	1975	42	629
" "	Mrs. Jane A. Darden	PIA	Jan	01	1975	42	630
Dyer, Walter E.	The First Nat'l Bank	PIA	Jan	27	1975	43	1
Desoto County Supervisor	Miss. Power & Light Co.	release	Feb	21	1975	43	26
Dunlop, Saberns Co.	G. E. Allison, et al	PIA	May	23	1975	43	162

DeSOTO COUNTY, MISSISSIPPI

REVERSE

REMENT PRINTING CO., MERIDIAN, MISS.

GRANTEE	GRANTOR	Nature of Instrument	Date of Filing Instrument			Recorded	
			Month	Day	Year	Book	Page
Dougherty, Charles Andy	Richard J. W. ^{et ux} adkins	Option	Nov	19	1975	43	344
1976							
Dorchester Place Apartments	Amended Limited Partnership	Limited Partnership	March	1	1976	43	483
301 Drive - In Grocery, Inc.	Dorothy Tully Hopkins	Lease	Apr	30	1976	43	528
DeWitt, Jack	Ralph J. Mason	Lease	June	14	1976	43	575
Delta Utility Co	First DeSoto Corp.	Easement	Aug	30	1976	126	13
Darby, Robert C., et ux	Banks and Company	Lease	Oct	20	1976	44	149
DeSoto County, MS., et al	D. S. Jarratt, et ux	Lease	Oct	28	1976	44	163

DeSOTO COUNTY, MISSISSIPPI
REVERSE

GRANTEE	GRANTOR	Nature of Instrument	Date of Filing Instrument			Recorded	
			Month	Day	Year	Book	Page
Dexter, James D., et al	Charles Mayner, et al	Conveyance of Deeds	Jan	26	1977	44	307
Davis, Richard	Fannie Davis Snell	PIA	Feb.	8	1977	44	315
Dalberto, William M., Jr.	Burdie D. Munn	PIA	May	26	1977	44	423
Dunaway, Elizabeth Ann Dye	Addie W. Kelso	P/A	Oct.	13	1977	44	680
Danley Machine Corp.	Holiday Insur, Inc	Easement Agreement	Oct	27	1977	140	128
1978							
Day, Ruby Anglin	Maggie H. Anglin	P/A Lease Agreement	Feb	22	1978	45	15
Danley Machine Corp.	Town of Olive Branch	Lease Agreement	Mar	22	1978	45	44
Darden, Jane P.	Miss. Lady Williams	PIA	April	10	1978	45	140
Darden, Ethel Bore	Ruby C. Stewart	Agreement	April	6	1978		
Dunaway, Betty Ann, et al	Albert M. Dye	PIA	April	20	1978	45	162
Dunlap, Jerry Dicky Realty	Jerry Dunlap	PIA	Sept	19	1978	45	500
Dickens, Robert C. D/B/E	Ernest S. Smith Jr.	Lease/option Contract	Sept	29	1978	45	506
Donaldson, Wilbur D.	Sadie Beasley	P/A	Nov	27	1978		
1979							
Day, Ruby A.	C. Joe Day	PIA	May	25	1979	46	177
Day, Joe C.	Ruby A. Day	PIA	May	25	1979	46	176
Dendry, James D.	Allen C. Roberts, et al	Lease non-exclusive	June	5	1979	46	184
DeSoto County, Miss.	John D. Anderson	Lease agree	Dec	5	1979	46	457
Davis, Martha M.	Ruby Lee Alcorn	PIA	Dec	6	1979	46	459
Duncan, Donald Lee, et al	Ronald Riley, et al	Sales Contract	Dec	6	1979	46	463
1980							
DeSoto County, Mississippi	Elizabeth E. Cooke	Lease	Feb	11	1980	46	625
Dover Corporation	City of Horn Lake, Miss.	Lease agree.	March	20	1980	47	99
"	City of Horn Lake, MS., et al	Lease	Mar.	27	1980	47	210
Dickens, H. Duval, et al	Tosco Corporation	PIA employment	April	11	1980	47	293
Dixon, Cathy L.	Fidelity Personal Service	agree	Oct.	13	1980	47	541
Dillard, Brenda, et al	Ether Calman	PIA	Oct.	15	1980	47	547
1981							
DeSoto South Associates	De Soto - South Associates	Agreement	Feb.	18	1981	48	385
Dewett, Ruby A.	James A. Dewett	PIA	Feb.	23	1981	48	401
Daniels, ReLafah B.	Harry Edward Lance	p/a	Mar.	31	1981	48	519
Davis Hayward S. Taylor, Jr.	Sub-Davis Thompson, et al	PIA	June	5	1981	48	629
DeSoto County, Ms	Veronia Richardson, et al	lease	Aug	11	1981	48	704
Davis, Dennis M., et al	John C. Stallings, et al	Lease	Sept	10	1981	49	5

Row

DeSOTO COUNTY, MISSISSIPPI

REVERSE

DEMENT-MERIDIAN 43-9603

GRANTEE	GRANTOR	Nature of Instrument	Date of Filing Instrument			Recorded	
			Month	Day	Year	Book	Page
Davis, Lula De Soto County, Miss.	Robert Harley	P/A	Sept.	18	1981	49	200
	Aaron Hinds	Enclosure to agreement	Oct.	8	1981	49	215
1982							
Davis, Juanita Middleton et al De Soto County, Miss.	Claudia Middleton	General P/A	Jan.	7	1982	49	359
Dorsey, Arnold	Dora S. McRae, et al	lease	Jan.	19	1982	49	365
	Ernest W. Sawall, Jr., et al	Conditional Sale Contract	July	23	1982	50	23
Da Ponte, Karen Ann et al	Manuel A. Da Ponte	P/A	Sept.	20	1982	50	192
Davis, Hayward S., Jr. DBA Dale-Gray Farms	Raymond W. Farley Dev. Co.	Partial Release	Sept.	21	1982	50	193
Dale, Thomas W. et al	Billy D. Gray, et al	Buy/Sell	Oct.	5	1982	50	222
De Soto Health Center, Ltd.	De Soto Health Center, Ltd.	Certificate of Incorporation	Oct.	12	1982	50	229
Da Ponte, Karen A.	Manuel A. Da Ponte	P/A	Oct.	18	1982	50	237
Davis, Hayward S., Jr., et al	Raymond W. Farley Dev. Co.	Partial Release	Dec.	2	1982	50	467
1983							
De Witt, Wanson W.	Rayston E. Barrell	P/A	Mar.	31	1983	51	67
De Soto County	Bill Robinson	Lease	May	16	1983	51	153
De Soto County	Carney Smith	Lease	May	16	1983	51	156
De Soto County Board of Supervisors	Jackson, MS James Hamer wife Mrs Co. of	lease	June	21	1983	51	259
De Soto County, Miss.	N. B. Hunt	Memorandum of Option	July	5	1983	51	272
Doddridge, Elizabeth N.	Katherine W. Nichols	P/A	July	25	1983	51	305
Davis, Bill	Sylvia G. Smith	limited P/A	Aug.	1	1983	51	317
Dechert, Peggy Ann Neal	Annie Lee Neal	P/A	Sept.	6	1983	51	391
1984							
Delugach, Martha Hill et al Mrs. Pearl Driver Driver, N.T. Conservator of Department of Transportation Down Elevator Systems	Louise B. Hill	P/A	May	17	1984	52	6
	Robert T. Akin	Cancellation agreement	May	23	1984	52	80
	David W. Pinnas Jr., et al	agreement	May	23	1984	52	77
	Down Corp.	lease agreement	Dec.	28	1984	52	711
1985							
Dillon, Roger L.	Ammochem, Inc.	Limited power of attorney	Jan.	9	1985	52	726
Daniel Drilling Program, Ltd.	Seier Alfred Management Corp.	limited partnership	Feb.	13	1985	53	8
Duff, Vera Marie De Soto County	Thelma M. Lykes	P/A	March	15	1985	53	47
D & B Diesel Service, Inc. De Soto Co. Ms.	Denver Howell	Lease	April	19	1985	53	169
De Soto Co. Board of Supervisors De Soto Co. Ms.	Wm. A. Small, et al	lease agreement	July	30	1985	53	359
	Herbert Mc Ingvale	lease	July	31	1985	53	374
De Soto Co. Board of Education De Soto Co. Ms.	De Soto Co. Board of Education	agreement	Sept.	9	1985	53	472
	Charles L. Long	agreement	Sept.	9	1985	53	482
Davis, Carlton et al	Audie Davis	General P/A	Nov.	22	1985	53	580
Dunning, Janice M.	Lorayne P. Blat-felter	P/A	Dec.	3	1985	53	649
Durbin, James R.	W. L. Harris Sr., et al	Lease	Dec.	30	1985	54	213

See Corp. BK

DeSOTO COUNTY, MISSISSIPPI

REVERSE

DEMENT-MERIDIAN 43-8603

GRANTEE	GRANTOR	Nature of Instrument	Date of Filing Instrument			Recorded	
			Month	Day	Year	Book	Page
Deposit Guaranty Nat'l Bank	De Soto County 1986	Trust indenture	Dec-	31	1985	54	279
Delaney, Lloyd, et al	H. R. Sand Dev. Inc.	Sales Contract	Jan	23	1986	54	473
Department of Transportation	David W. Pinion Jr., et al	Supplemental Agreement # 3	Feb	18	1986	54	545
Daley, Fredo L.	Joseph Michael Daley	P/A	May	27	1986	54	673
Dickerson, Thomas Hyde	Thomas Dale Dickerson et al	1st Release of P/A + P/A TO Purchase Home	Oct	8	1986	55	190
Davis, James, et al	First Loan Bank N.A. N.Y.N.	Agmt.	Oct.	28	1984	55	213
DeSoto County, MS.	Norman Summers Est., et al	Decease	NOV	14	1986	55	323
Dobbin, Paul Edward	Frank L. Scott	General P/A	March	4	1987	55	488
"	Jewell B. Scott	General P/A	March	4	1987	55	489
DeSoto Co. MS.	Joseph D. Austin et al	Decease	May	29	1987	55	630
De Soto Co. Board of Education	City of Hernando	Intervent	Aug.	17	1987	55	727
Dillard, Wynona, et al	Richard V. Dillard	P/A	Oct	2	1987	56	120
Department of Transportation	J. Cecil Mason et al	Supplemental Agreement	NOV	9	1987	56	181
"	R.R. Bridgforth News Partnership	Supplemental Agreement	NOV	9	1987	56	184
1988							
Depositors Federal, Jackson, Mo	Federal Home Loan Mtg Corp.	Limited P/A	Feb.	11	1988	56	446
Davis, Francis A.M.	Annette B. Ellis	P/A	March	21	1988	57	60
"	Thomas W. Ellis Jr.	P/A	March	21	1988	57	62
Dugach, Richard E.	Thomas W. King Jr.	Decease Agreement	March	28	1988	57	71
Deposit Guaranty National Bank	Rasco L.P.	Assignment of Rent & Lease	July	1	1988	57	235
Dowdy, Dwight L.	Eolia D. Easley	General P/A	July	12	1988	57	259
Dowdy, Dwight L.	William W. Easley	General P/A	July	12	1988	57	260
Dellinger, Ray	Debra D. Dellinger	P/A	Aug.	3	1988	57	304
Dellinger, Shelma	" " "	P/A	Aug.	3	1988	57	307
De Priester, Vivian	" " "	P/A	Aug.	3	1988	57	310
Davis, James D., et al	Laurie T. Nichols, et al	option Purchase	Sept.	13	1988	57	401
Douglas, Betty C. et al	Mrs Lexie P. Cole	P/A	Sept.	14	1988	57	403
Douglas, Huran	Charles E. Douglas	P/A	Oct	17	1988	57	474
Deason, Harry N.	American Gen. Finance Corp.	1st manufacturing Paper Consumer Bank	Aug.	30	1988	57	505
Deposit Guaranty Nat'l Bank	Spirit Petroleum, Inc.	Decease of Int'd Lease	Oct	21	1988	57	509
Davis, Carol H.	Jewell Re	P/A	Nov.	1	1988	57	528
Department of Transportation	J. Cecil Mason, et al	Supplemental Agreement	NOV.	10	1988	57	537
Deposit Guaranty National Bank	R. V. D., Inc.	Assign. Lease	Dec.	5	1988	57	632
Deposit Guaranty National Bank	W. Rodney Coleman	Assignment of Rent and Lease	Dec.	14	1988	57	646
De Soto County, Mississippi	Leas Corp.	Assign. Lease	Dec.	23	1988	57	653
1989							
Davis, William L. or C.E. Davis	Abuse Davis	P/A	Feb	10	1989	58	254
Deason, Harry N.	American General Finance Inc.	Decease of P/A	Feb.	27	1989	58	289
DeSoto County, Miss.	City of Hernando	Local agree	March	30	1989	58	342
Deposit Guaranty Nat'l Bank	Rasco L.P.	Assignment	May	10	1989	58	428
DeSoto Partners	B. F. Mayer, Jr., et al	Certificate of Partnership	June	2	1989	58	460

DeSOTO COUNTY, MISSISSIPPI

REVERSE

DEWENT-MERIDIAN 43-9603

GRANTEE	GRANTOR	Nature of Instrument	Date of Filing Instrument			Recorded	
			Month	Day	Year	Book	Page
Dickey, C. W. Deposit Guaranty Natl. Bank DeSoto County Mississippi	Connie R. Nelson Jerome B. Makowsky, et al Paul H. Straud, Jr., Guardian	P/A Assignment Mortgage Guardian	June	29	1989	58	498
			Nov.	14	1989	59	328
			Nov.	28	1989	59	412
1990							
Dosley, William D., Dormois, Larry, et al	Le Bonheur Children's Medical Center, Inc.	Easement Agmt.	Jan.	26	1990	59	564
Dosley, William D., et al	" " "	Agreement	Jan.	26	1990	59	571
Dormois, Larry, et al	" " "	Agreement	Jan.	26	1990	59	575
Deposit Guaranty Natl. Bank	Mason, Harrison + Janard Ent.	Assignment Lease	Feb.	28	1990	59	637
Deposit Guaranty Natl. Bank	North Miss. Utility Co. Inc.	Assignment	March	23	1990	59	670
" " " "	" " " " A/E/A	Assignment	March	23	1990	59	671
" " " "	" " " " " "	Assignment	March	23	1990	59	672
" " " "	North Miss. Utility Co. Inc.	Assignment	March	23	1990	59	673
DeSoto Development Co.	Donald W. Marble, et al	Amended Agmt	April	27	1990	59	768
" " "	" " "	Assignment	April	27	1990	59	770
Deposit Guaranty Natl. Bank	Broadway Baptist Church	Assignment Lease	May	21	1990	60	55
Dempsey, Rita Barrett	William Tommy Barrett	P/A	June	14	1990	60	121
DeSoto Family Medical Center	William H. Mc Clatchy, et ux	Lease Agmt	June	15	1990	60	134
Dipman, George C.	Resolution Trust Corp.	P/A	Aug.	30	1990	60	315
Deposit Guaranty Natl. Bank	James A. Whitten	Assignment of Lease	Nov.	5	1990	60	622
1991							
Drummond, Regina P., et al	Woodrow E. Pickens	P/A	Jan.	10	1991	61	43
" " "	Mildred V. Pickens	P/A	Jan.	22	1991	61	81
Quinlan, Karen B.	John C. Baird	P/A	Jan.	28	1991	61	118
" " "	Geneva A. Baird	P/A	Jan.	28	1991	61	120
Deposit Guaranty Natl. Co.	Federal National Mtg. Assn.	Assignment P/A	Feb.	27	1991	61	199
Dominick, Gloria et al	James Donald Hall	P/A	Sept	3	1991	62	71
Downs, Kathy Mae	James Franklin Downs	P/A	Sept	13	1991	62	90
Deposit Guaranty National Bank	Memphis CATV, Inc.	Agreement	Oct.	2	1991	62	123
Downen, Leon H. et al	Total Petroleum Inc.	Release Bill of Sale	Oct.	16	1991	62	178
Duvernay, Steve	Ronald Reine	P/A	Oct	17	1991	62	180
Daniel, Donald L., et al	Rainey Boyd, et al	Contract	Dec.	3	1991	62	310
Dalton, Thomas Jerome	Luy Mae Clemmons	P/A	Dec.	27	1991	62	411
1992							
Doye, Roberta D.	Florence Ann Upson	P/A Equipment	Jan.	10	1992	62	435
DeSoto Paving, Inc.	Go Bar Incorporated	Lease	Jan	31	1992	62	484
" " Co., Inc.	" " "	Financial Agreement	Jan	31	1992	62	488
DeSoto Station Partners	Dudley B. Bridgforth Jr. et al	Assignment	Feb.	18	1992	62	522
Dominion Bankshares Mtg. Corp.	Q 7th Mortgage Securities, L.P.	P/A	Feb	24	1992	62	547
Deposit Guaranty Natl. Bank	Hal S. Mullins, et al	Assignment Release of Lease	Feb	27	1992	62	548
Dunlap, Michael Edwin	Robert H. Dunlap	Revocable Trust Agreement	April	20	1992	62	725
Jarris, Oma H. or David R. Jarris	Carol Anne Jarris	General P/A	April	20	1992	62	743

DEMENT-MERIDIAN 42-8603

GRANTEE	GRANTOR	Nature of Instrument	Date of Filing Instrument			Recorded	
			Month	Day	Year	Book	Page
Douglas S. Development, Inc.	Felner + Associates,	Mortgage	April	22	1992	62	755
Duncan, Sarah Ross, etal	Novelle Freeman Ross	PIA	May	18	1992	63	131
Dean, John W., Jr., etal	D. P. Bastain, etal	Contract	June	3	1992	63	209
Deposit Guaranty Natl Bank	North Miss Utility Co. Inc.	Assignment	June	15	1992	63	243
Domico, Richard Cedric, etal	Resolution Trust Corp.	PIA	July	6	1992	63	383
Hanels, Hon.	Myrtis P. Wadsworth	Contract	March	2	1992	248	35
Davis, Nancy Kay (Queen)	Gregory Clement Bues	PIA	Aug.	7	1992	63	476
Deposit Guaranty Natl. Bank	Harold Crege, etal	Assignment of PIA	Aug.	18	1992	63	495
Dayton, Clinton W. Jr.	Clinton W. Dayton	PIA	Aug	28	1992	63	523
Alana Corporation	Hannon Properties, Inc.	Assignment of Sublease	Sept	11	1992	63	584
"	MRSL Olive Branch Ltd Partnership	Assignment	Sept	11	1992	63	587
DeSoto County Miss.	The City of Savannah	Agreement	Sept.	28	1992	63	665
Davis, Betty Charles	Mary Holland Quarles	PIA	Oct	13	1992	63	623
Davis, Betty Charles	Mary Holland Quarles	PIA	Oct.	16	1992	63	710
deJalco, Susan	JDJC	Assignment of PIA	Nov	5	1992	63	764
DKM Corporation, etal	Banks + Company Partnership	Lease	Nov.	24	1992	64	131

1993

DeSoto County Public Improvement Corp	DeSoto County Miss	Mortgage	Jan.	6	1993	64	321
DeSoto County Miss.	DeSoto County Public Improvement Corp	Assignment of PIA	Jan.	6	1993	64	328
DeSoto County Public Improvement Corp	DeSoto County Miss	Mortgage	Jan.	6	1993	64	370
DeSoto County Miss.	DeSoto County Public Improvement Corp	Assignment of PIA	Jan.	6	1993	64	377
Alana Corporation	Principal Mutual Life Ins Co.	Assignment of PIA	Jan	5	1993	T10 620	94
Deposit Guaranty Natl Bank	Nason, Harrison	Assignment of PIA	Feb.	4	1993	64	475
Davis, Joseph M., etal	Resolution Trust Corp	PIA	Feb.	22	1993	64	514
Denson, Lois E.	Norris Vernon Denson	PIA	April	1	1993	64	609
Deaton, Martha Ann	Mandy Mae Smith	PIA	April	29	1993	64	680
Dibble Robert K., etal	Federal Deposit Insurance Corp	PIA	June	25	1993	65	12
Dean, Sheila, etal	Resolution Trust Corp.	PIA	July	19	1993	65	55
Deposit Guaranty Natl Bank	Rasco, L.P.	Assignment of PIA	Aug	4	1993	T10 652	671
Garden, Robert W. Sr.	Robert W. Garden, Jr.	PIA	Aug.	13	1993	65	142
Deposit Guaranty Natl Bank	Rasco, L.P.	Assignment of PIA	Aug	20	1993	T10 655	787
Hodson, Sharon C	James S. Hodson	PIA	Sept.	1	1993	65	241
Davis, Clifford P.	Sidney Davis	PIA	Oct.	13	1993	65	437
Davis, Clifford P.	David R. Davis	PIA	Oct.	13	1993	65	440
Davis, Clifford P.	Donald S. Davis	PIA	Oct.	13	1993	65	443
DeSoto Co. Mississippi	Bern Feinstein	Agreement	Oct	20	1993	65	502
DeSoto Dev. Corp	Cablevision Corp.	Agreement	Oct.	29	1993	65	541
DeSoto Enterprises P/B/A	Eubanks and Bailey Investment Corp.	Agreement	Nov.	30	1993	65	643
Hoddridge, James A. Jr.	Ruth E. Hoddridge	PIA	Dec.	1	1993	65	649
Hoddridge, James A. Jr.	Ruth E. Hoddridge	PIA	Dec.	28	1993	65	731

See next page

GRANTEE	GRANTOR	Nature of Instrument	Date of Filing Instrument			Recorded	
			Month	Day	Year	Book	Page
1994							
etal Harding College, Inc. Doddridge, John W., Jr., Trustee	John Clyde Harbin	Charitable Trust	Jan	26	1994	66	16
Dawkins, Elizabeth Jane	Buford Nelle H. Buford	General P/A	Jan.	28	1994	66	27
Dunavant Enterprises Inc.	Budgforth Lewis Builders	Deed	Jan.	31	1994	66	52
Davis, O'Vetta, etal	Jimmie D. Davis	General and Special P/A	Feb.	1	1994	66	54
Davis, Rebecca J.	Charles John Scott, Jr.	Special P/A	Feb	22	1994	66	146
Diaz, Marc A.	Steve G. Miles	Special P/A	May	5	1994	66	364
D-S M, Inc. etal	Hal S. Mullins etal	of lease assign	June	6	1994	66	444
" " " " "	" " " "	of lease assign	June	6	1994	66	446
" " " " "	" " " "	of lease assign	June	6	1994	66	448
" " " " "	" " " "	of lease assign	June	6	1994	66	450
" " " " "	" " " "	of lease assign	June	6	1994	66	452
" " " " "	" " " "	of lease assign	June	6	1994	66	454
" " " " "	" " " "	of lease assign	June	6	1994	66	456
" " " " "	" " " "	of lease assign	June	6	1994	66	458
" " " " "	" " " "	of lease assign	June	6	1994	66	460
" " " " "	" " " "	of lease assign	June	6	1994	66	462
Daniel, Edizabeth P., etal	Walter Jerome Perry	Special P/A	June	21	1994	66	583
Davis, Dana D.	Brett J. Davis	Special P/A	Aug-	8	1994	67	12
Douglas, Juanita	Ruby Tifer	P/A	Sept.	20	1994	67	239
Dreanna Properties	Edward A. Crumpler, etal	Easement	Sept	27	1994	67	262
Dunn, Jack E.	Lora V. Franklin	Deed	Sept	30	1994	67	269
Davison, Chris	Lester O. Cummings	P/A	Oct.	27	1994	67	369
Dixon, Evelyn H., etal	Ruby D. Harris	P/A	Nov	2	1994	67	403
Dunn, Freddie	Nadine Dunn	P/A	Nov.	7	1994	67	430
Deposit Guaranty Natl Bank	Goodman Partners L.P.	Assignment	Dec.	1	1994	67	557
1995							
Don M. Barron Contractor Inc.	Cub Ridge/Sauthamen L.P. etal	agreement	Feb.	21	1995	68	125
Davis, Melvin	Georgia A. Wallace	Deed	March	1	1995	68	179
Deposit Guaranty Natl. Bank	William L. Reid, Jr.	Assignment	Mar	2	1995	68	218
DeSoto Co., Mississippi	Ydha Hill Brothers Const. Gerald Hill	agreement	April	26	1995	68	534
" " " "	William Bartrell	agreement	May	24	1995	68	639
" " " "	Tommy Johnson, etal	agreement	May	24	1995	68	642
Davis, Chris, etal	Karen H. Sanders	agreement	May	26	1995	68	660