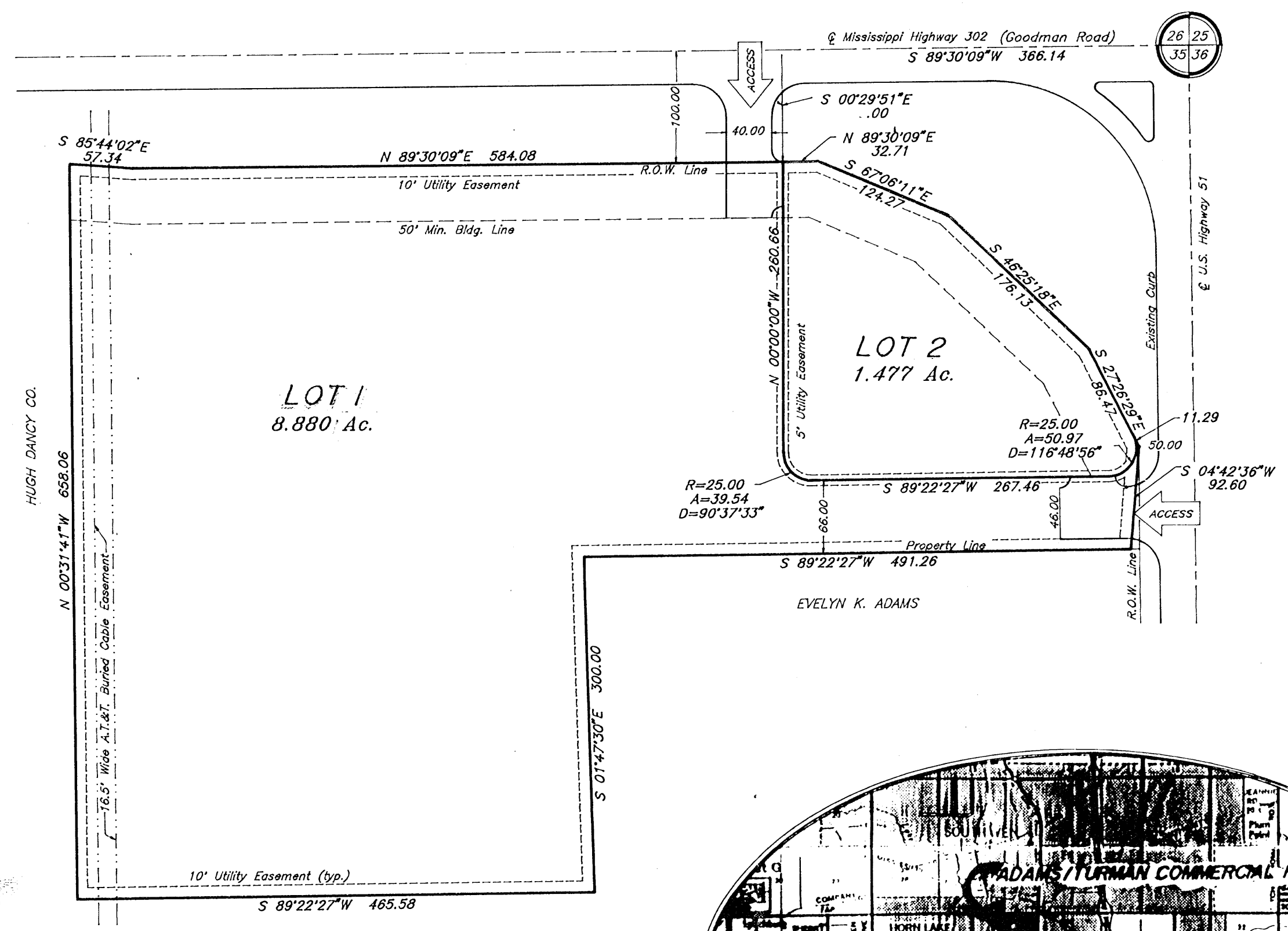


# ADAMS/TURMAN COMMERCIAL PLAZA



Approved by the CITY OF HORN LAKE PLANNING COMMISSION on this the 28 day of July, 1993.

*Oliver Michels*  
CHAIRMAN  
*Ray Black*  
ATTEST

OWNER'S CERTIFICATE

We, RFS-HORN LAKE ROAD, L.P., owners of the hereon shown property, hereby adopt this plan of subdivision and dedicate the right-of-way of roads as shown on the plat of the subdivision to the public use forever and reserve for the public utilities, the utility easements shown on the plat, as the act and deed of said corporation, after having been duly authorized by said corporation so to do.

*Mike Pascal*  
MIKE PASCAL, Secretary for RFS, Inc.,  
General Partner of RFS-Horn Lake Road, L.P.

NOTARY'S CERTIFICATE

State of Tennessee  
County of Shelby

Personally appeared before me, the undersigned authority in and for said county and state, on this the 28 day of July, 1993, within my jurisdiction, the within named MIKE PASCAL, who acknowledged that he is Secretary of R.F.S. Inc., which is a General Partner of RFS-Horn Lake Road, L.P., and that for and on behalf of RFS-Horn Lake Road, L.P., and as its act and deed he executed the above and foregoing instrument, after first having been duly authorized by said corporation so to do.

*Linda J. Brude*  
NOTARY  
My Commission Expires Aug. 8, 1995

Approved by the CITY OF HORN LAKE BOARD OF ALDERMAN on this the 16 day of Sept, 1993.

*Mike Thomas*  
MAYOR  
*Dana A. Steed*  
CITY CLERK (Deputy)

STATE OF MISSISSIPPI

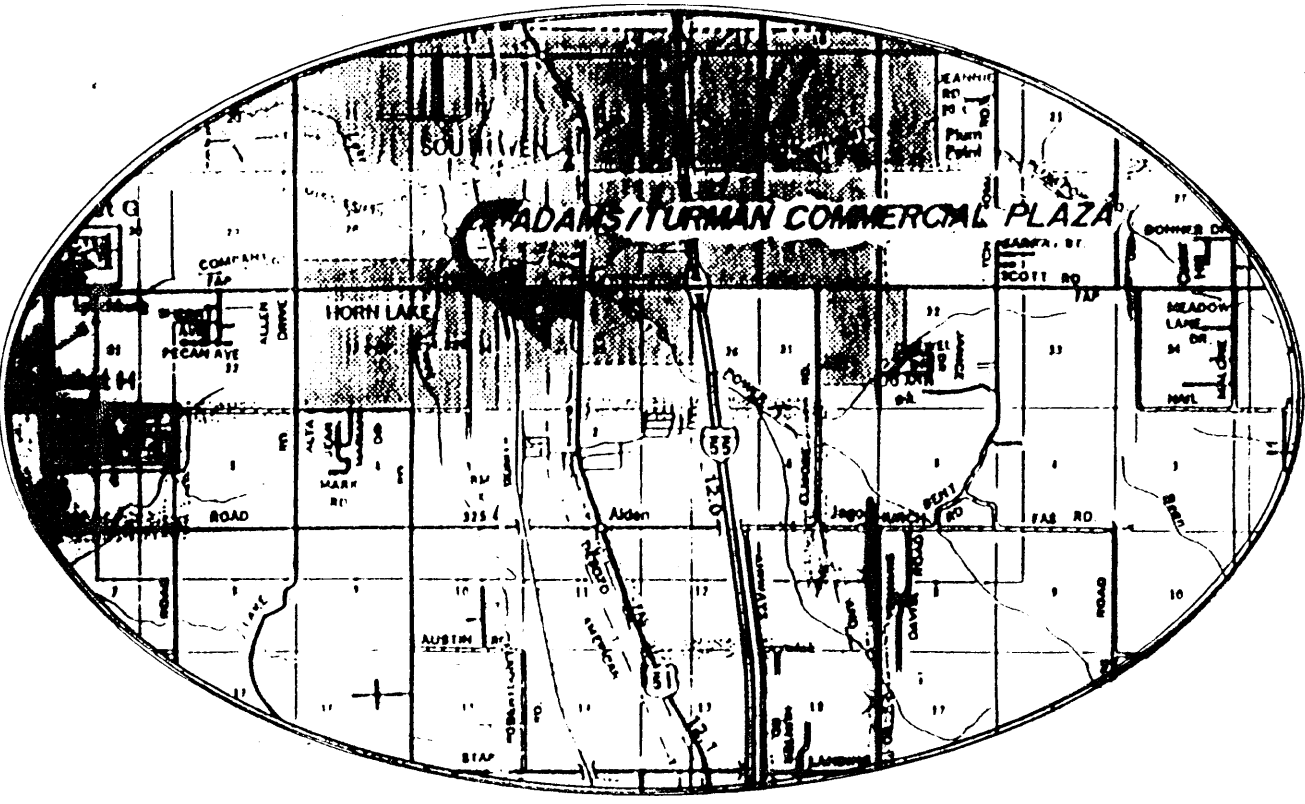
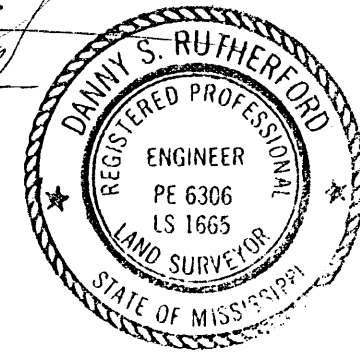
I hereby certify that the subdivision plat shown was filed for record in my office at 10:15 o'clock A.M. on this the 28 day of July, 1993, and immediately entered upon the index and duly recorded in Plat Book 444 on Page 12.

*W.E. Davis*  
CHANCERY CLERK  
*W. Adams, Jr.*

CERTIFICATE OF SURVEY

This is to certify that I have drawn the plat from a survey by myself and from deeds of record and that the plat represents the information and that it is true and correct.

*Danny S. Rutherford*  
DANNY S. RUTHERFORD, P.K.L.S.



NOTE:  
Drive entrances are to be common to both lots.  
Curb access is restricted to points labeled "ACCESS" on the plat.

# ADAMS/TURMAN COMMERCIAL PLAZA

10.36 ACRES, ZONED C-2 IN SECTION 35,  
TOWNSHIP 1 SOUTH, RANGE 8 WEST, DESOTO  
COUNTY, MISSISSIPPI

RUTHERFORD & ASSOCIATES  
ENGINEERING CONSULTANTS / SURVEYORS  
324 WEST VALLEY STREET, SUITE 208 / BERNARD, MS 38632  
TELEPHONE 601-429-5766

AUGUST 1993